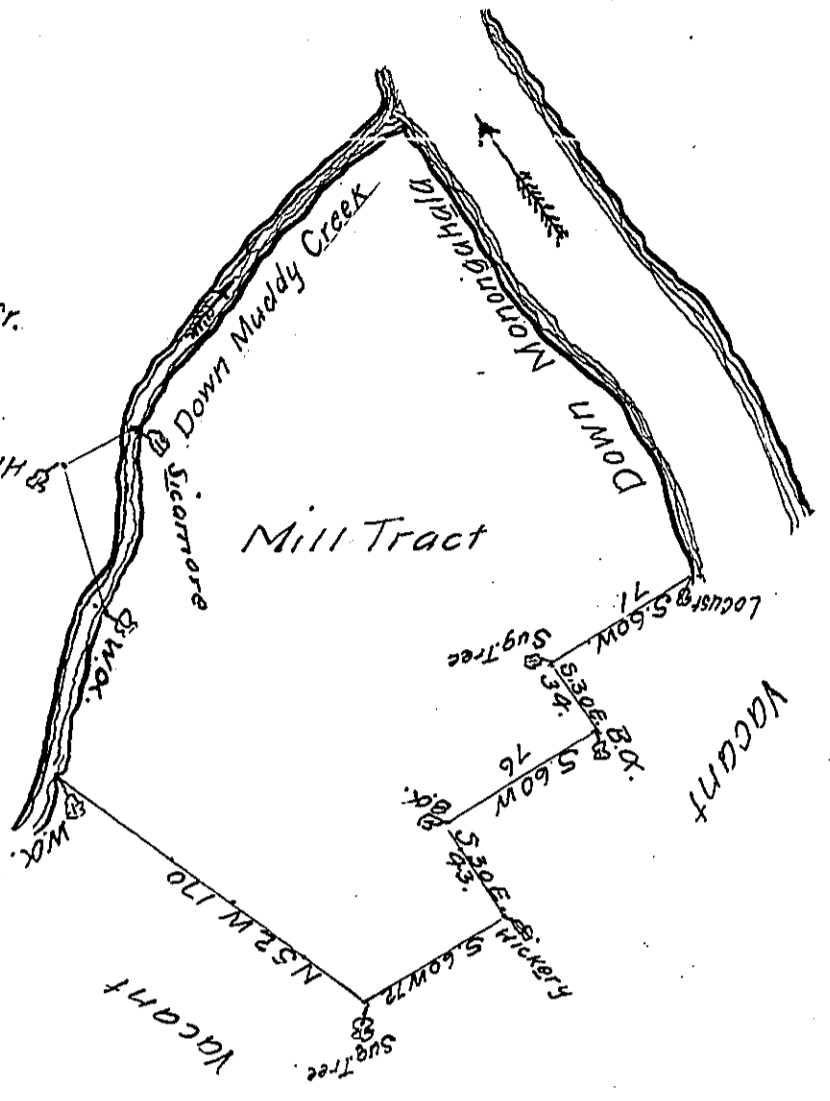


Courses Down Muddy Cr

- North..... 49P
- N. 19 E..... 24P
- N. 27 E..... 13P
- N 10W 48P
- N. 60 E. 22P
- N. 48 E. 180P
- To y^e mouth of Muddy Cr.
- Up the Monongahala
- S. 37° E. 100P
- S. 45° E. 36P
- S. 34 E. 35P
- S. 20 E 59P
- To a Locust



In pursuance of an order N^o 3299 dated 27th May 1769 the above is a Draught of a tract of Land call'd the Mill Tract containing 361 acres & the usual allowance of 6th p^t for Roads &c. situated on the West side Monongahala survey'd 24th October 1770 for John Armstrong by James Hendricks D.S.

To John Lukens Esq S.G.

IN TESTIMONY that the above is a copy of the original remaining on file in the Department of Internal Affairs of Pennsylvania, made conformably to an Act of Assembly approved the 16th day of February, 1833, I have hereunto set my Hand and caused the Seal of said Department to be affixed at Harrisburg, this thirty first day of May 1911

Henry Houck
Secretary of Internal Affairs.